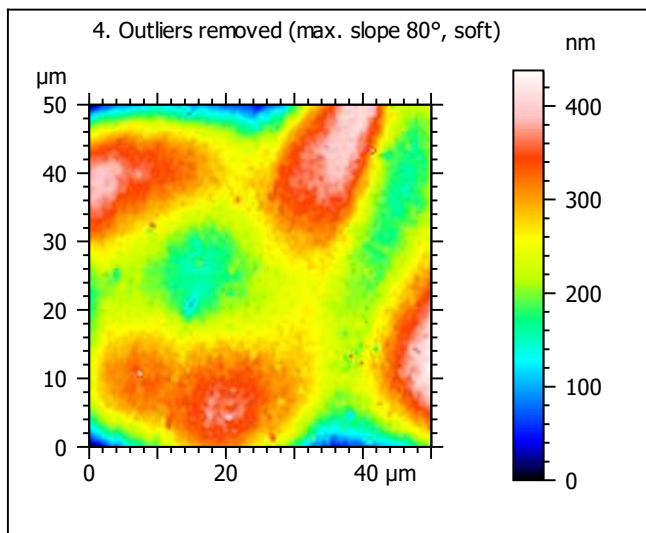
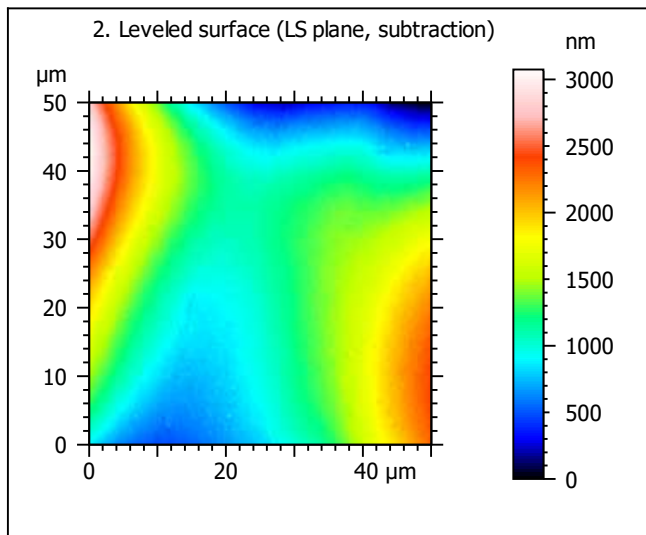
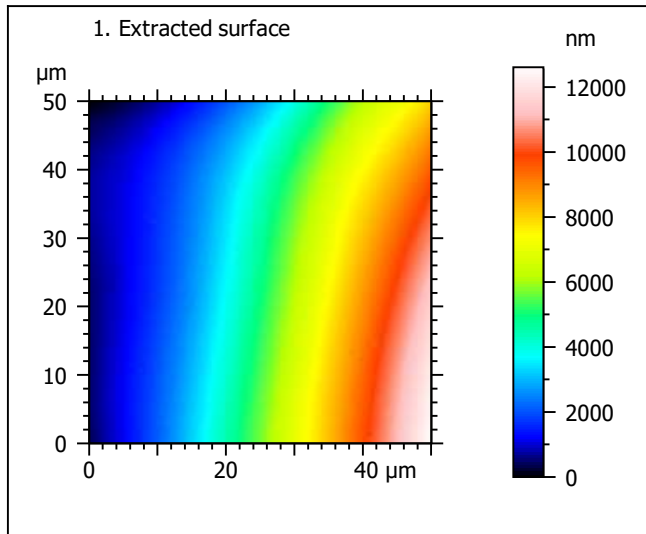
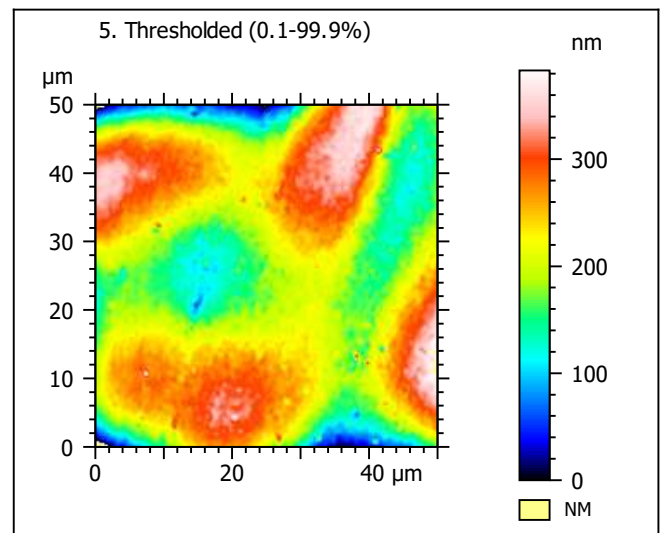
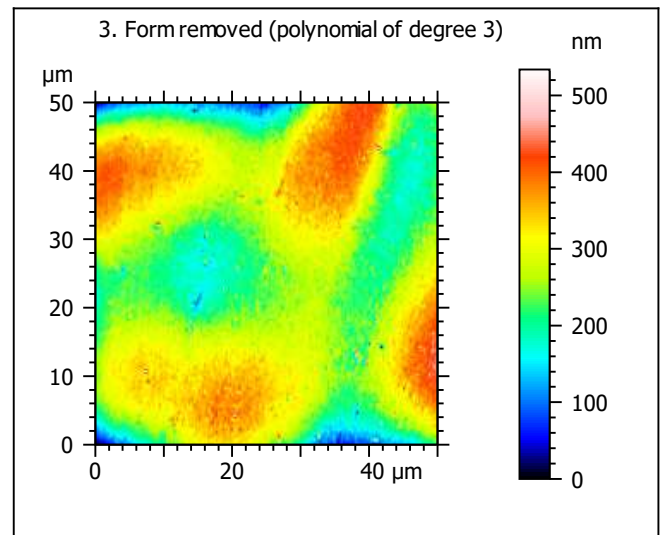


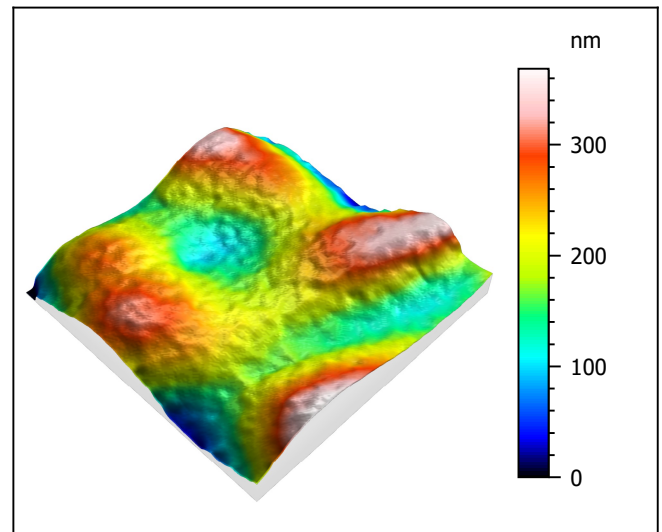
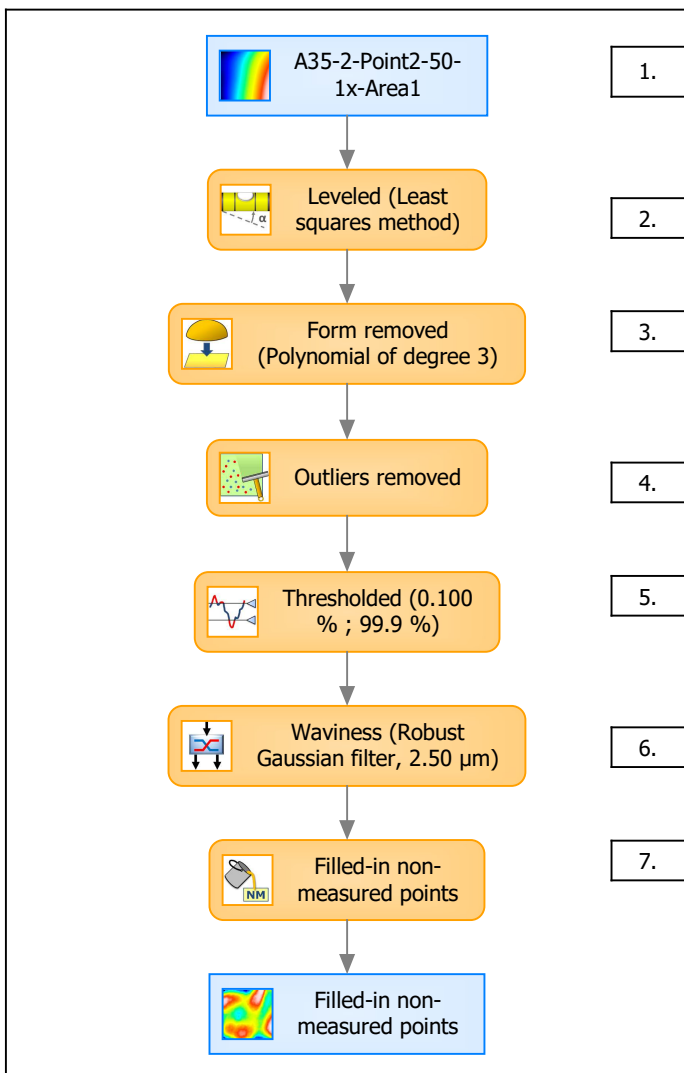
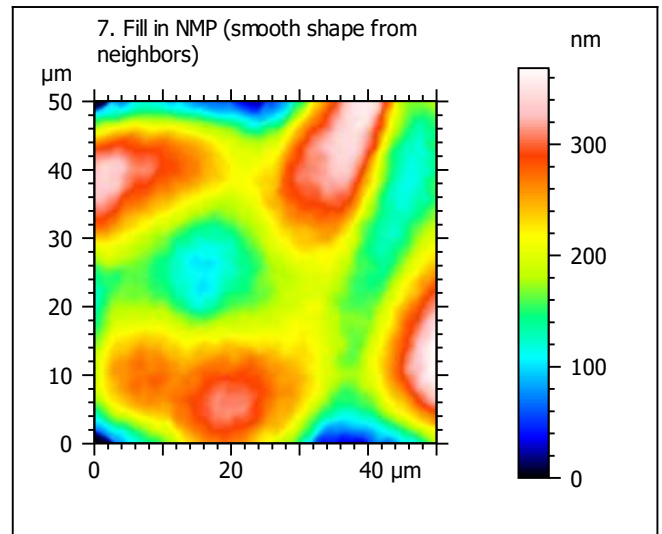
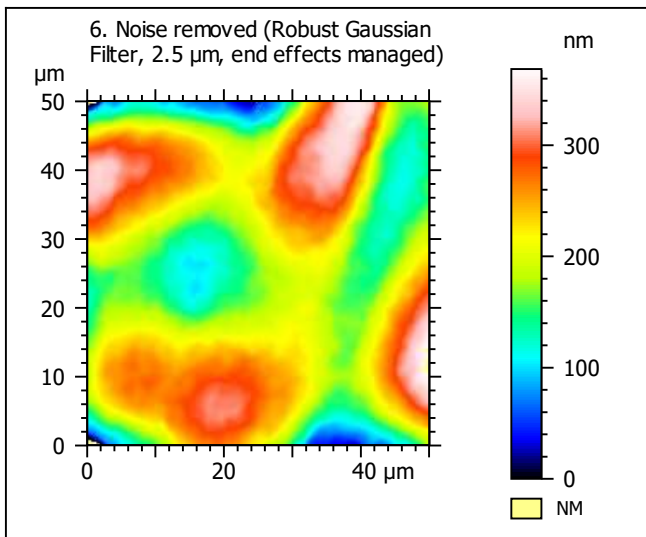
Template to process all extracted 50x50 μm surfaces, acquired with the LEXT 4000 with the 50x/0.95 objective at 1x zoom

A. Processing



Identity card			
Name:	A35-2-Point2-50-1x-Area1		
File path:	D:\Data\Anto\A...\A35-2-Point2-50-1x-Area1.sur		
Axis:	X		
Length:	50.0	μm	
Size:	201	points	
Spacing:	0.250	μm	
Axis:	Y		
Length:	50.0	μm	
Size:	201	points	
Spacing:	0.250	μm	
Axis:	Z		
Length:	12608	nm	
Size:	10535	digits	
Spacing:	1.20	nm	
NMP ratio:	0.00 % (0 Pts)		





Identity card			
Name:	A35-2-Point2-50-1x-Area1 > Leveled (Least s...		
Axis:	X		
Length:	50.0	μm	
Size:	201	points	
Spacing:	0.250	μm	
Axis:	Y		
Length:	50.0	μm	
Size:	201	points	
Spacing:	0.250	μm	
Axis:	Z		
Length:	369	nm	
Size:	308	digits	
Spacing:	1.20	nm	
NMP ratio:	0.00 % (0 Pts)		

Analyses:

8. ISO 25178

9. Furrow

10. Texture isotropy and direction

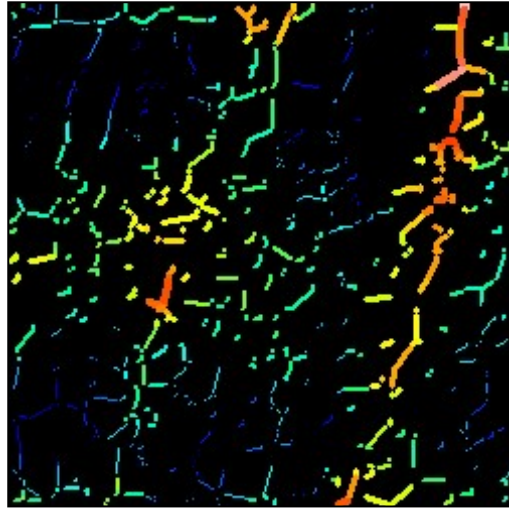
11. SSFA

B. Analyses

8. ISO 25178-2 parameters on surface #7

ISO 25178		
Height Parameters		
Sq	65.2	nm
Ssk	0.00948	
Sku	2.57	
Sp	158	nm
Sv	211	nm
Sz	369	nm
Sa	53.6	nm
Functional Parameters		
Smr	100	%
Smc	89.2	nm
Sxp	119	nm
Spatial Parameters		
Sal	5.44	μm
Str	0.677	
Std	81.2	°
Hybrid Parameters		
Sdq	0.0191	
Sdr	0.0184	%
Functional Parameters (Volume)		
Vm	0.00235	μm ³ /μm ²
Vv	0.0914	μm ³ /μm ²
Vmp	0.00235	μm ³ /μm ²
Vmc	0.062	μm ³ /μm ²
Vvc	0.0852	μm ³ /μm ²
Vvv	0.00616	μm ³ /μm ²

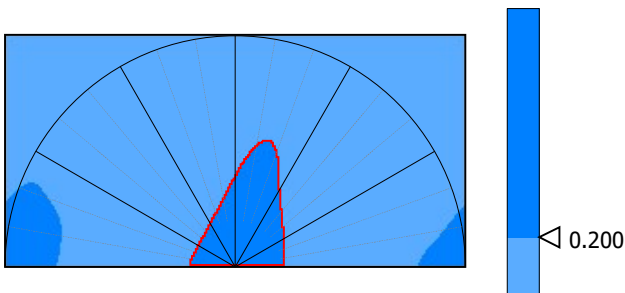
9. Furrow analysis surface #7



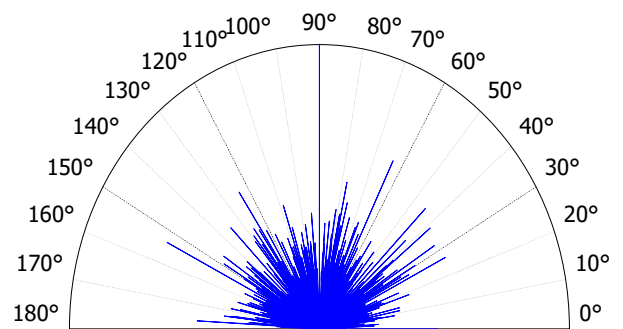
All furrows are shown.

Parameters	Value	Unit
Maximum depth of furrows	68.2	nm
Mean depth of furrows	26.6	nm
Mean density of furrows	1829	cm/cm2

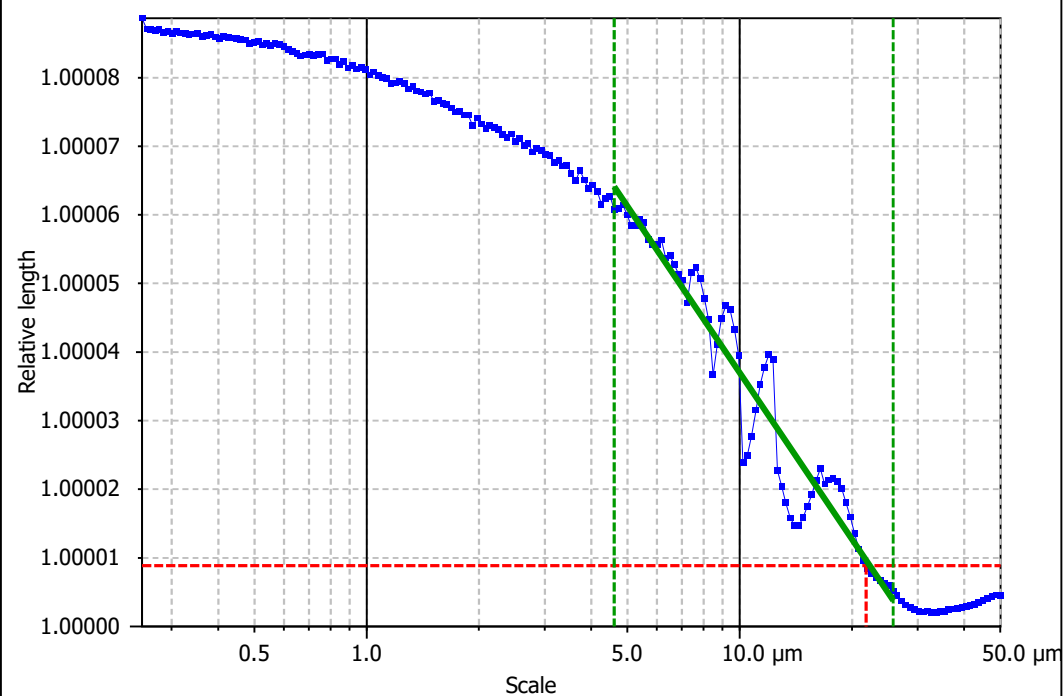
10. Texture isotropy and direction on surface #7



Parameters	Value	Unit
Isotropy	32.9	%
Periodicity	42.7	%
Period	25.1	μm
Direction of period	180	°

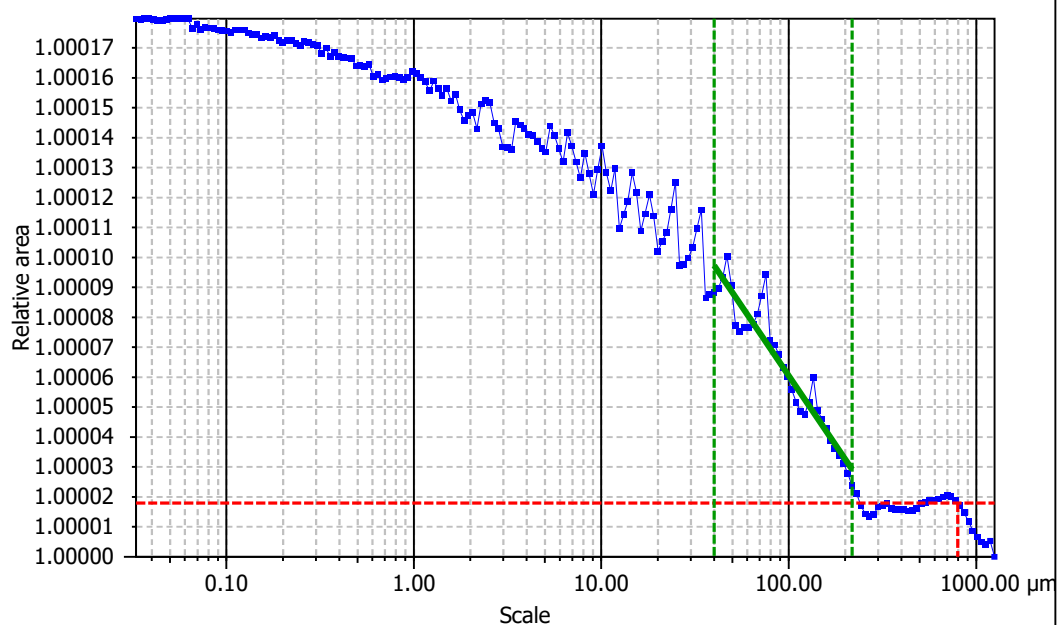


Parameters	Value	Unit
Isotropy	67.7	%
First Direction	90.0	°
Second Direction	153	°
Third Direction	63.5	°

**Information**

Method Length-scale (rows)

Parameters	Value	Unit	Comment
epLsar	0.0182		(1.8 μm , 5°)

**Information**

Method Area-scale (four corners)

Parameters	Value	Unit	Comment
Asfc	0.0402		
Smfc	98.3	μm^2	
HAsfc9	1.10		(3x3)
HAsfc81	NaN		(9x9)